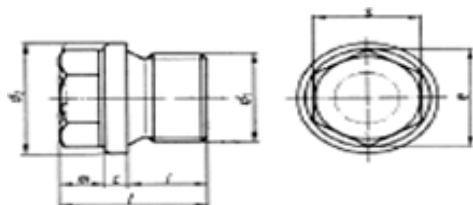


**DIN 910 / A2 / A4**

**Tappi cilindrici con spallamento ed esagono esterno**



DIN 228

d1	d2	s	e	m ~	c	i	l ~	A2	A4	CONFEZIONE
								Euro	Euro	
G 1/8" A	14	10	10,89	6	3	8	17	●	●	50
G 1/4" A	18	13	14,2	6	3	12	21	●	●	50
G 3/8" A	22	17	18,72	6	3	12	21	●	●	50
G 1/2" A	26	19	20,88	8	4	14	26	●	●	25
G 5/8" A	28	19	21,9	8	4	14	26	●	●	25
G 3/4" A	32	24	26,17	10	4	16	30	●	●	25
G 1" A	39	27	29,56	11	5	16	32	●	●	10
G 1 1/8" A	44	27	29,56	11	5	16	32	●	●	5
G 1 1/4" A	49	30	32,95	12	5	16	33	●	●	5
G 1 1/2" A	55	30	32,95	12	5	16	33	●	●	5
G 1 3/4" A	62	36	39,55	15	5	20	40	●	●	5
G 2" A	68	36	39,55	15	5	20	40	●	●	5